



WELCOME!

PUBLIC INFORMATIONAL MEETING

IDOT's I-270 OVER THE MISSISSIPPI RIVER BRIDGE REPLACEMENT

MoDOT's RIVERVIEW DRIVE & I-270 INTERCHANGE MODIFICATION

SWIC – Granite City Campus

May 4, 2022

4:00-7:00 PM

No Formal Presentation



PURPOSE OF MEETING

Inform the public of:

- Traffic management during construction
- Overall construction plan
- How to stay informed during construction





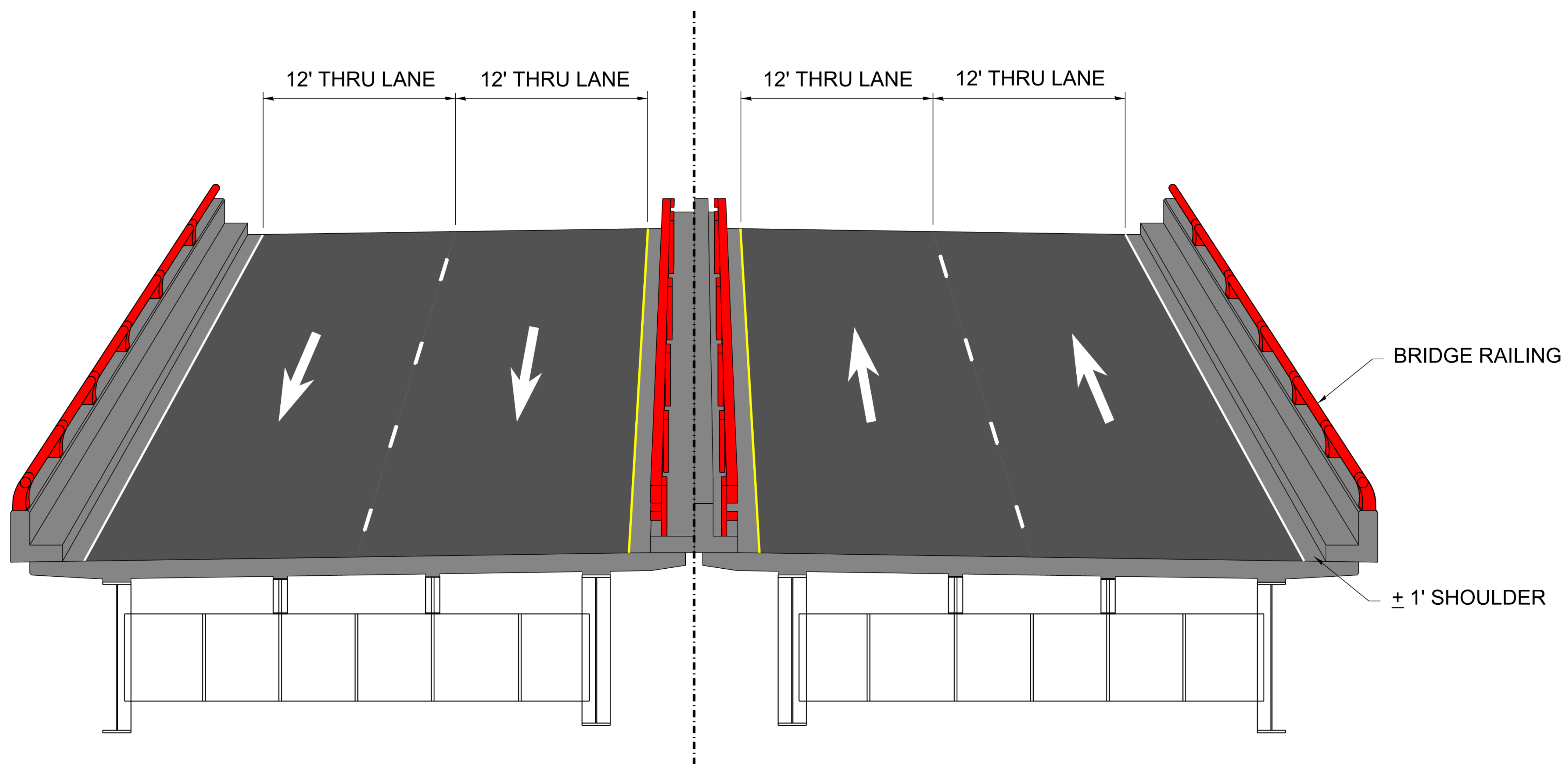
IDOT and MoDOT WORKING TOGETHER

- The limits of the projects overlap due to the close proximity of the Riverview Drive interchange to the bridge.
- IDOT and MoDOT have been working together on the projects since 2015 to plan and design the projects in order to ensure the roadway improvements associated with each project are compatible.
- IDOT and MoDOT have also worked together since 2015 on numerous public involvement activities, including newsletters, stakeholder meetings, Community Advisory Group meetings, and public meetings.
- IDOT and MoDOT will let (released for contractor bid) the projects together in a combined special July 2022 letting.
- Only one contractor will be awarded both projects which eases the coordination of construction.





TYPICAL SECTION OF EXISTING BRIDGE

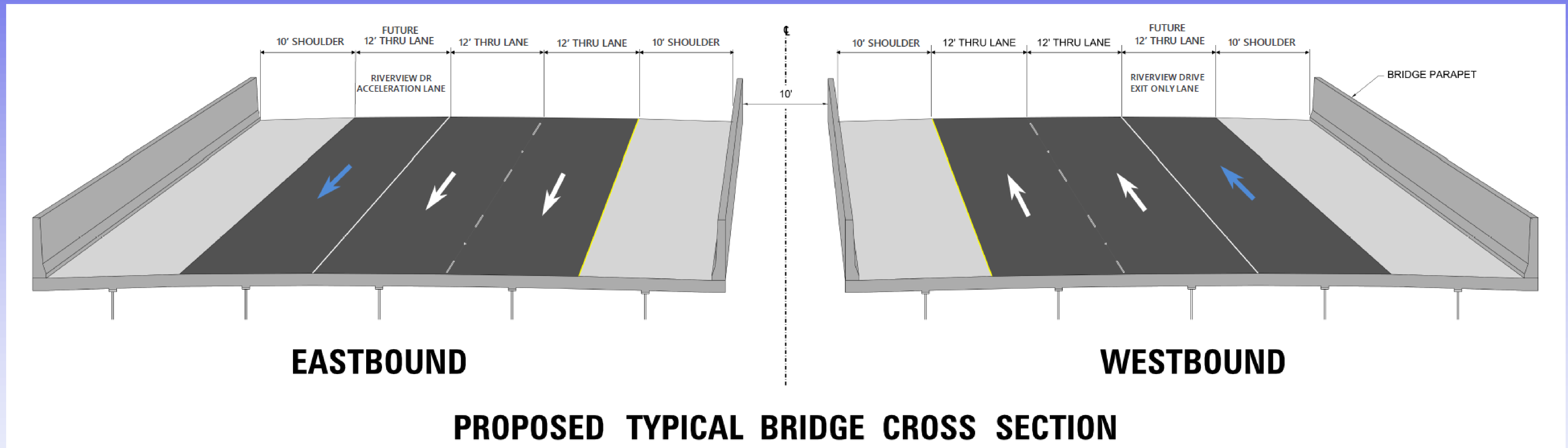


EXISTING TYPICAL BRIDGE CROSS SECTION



TYPICAL SECTION OF NEW BRIDGE

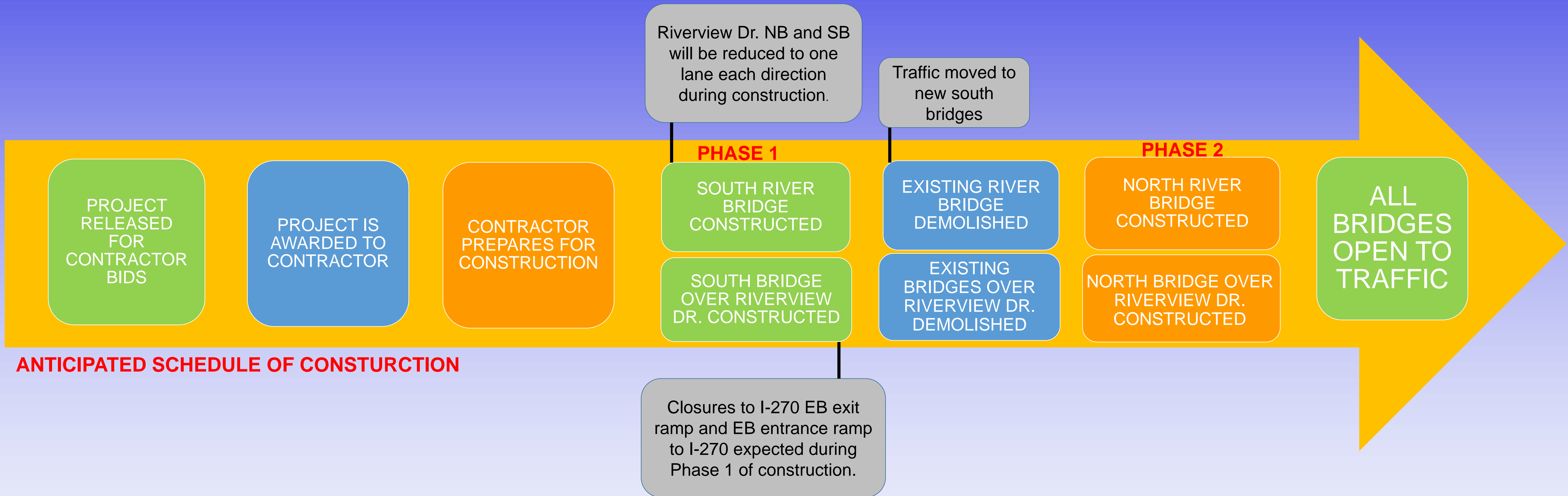
The new bridge will consist of twin structures



Six thru lanes on the bridge will not be utilized until adjacent sections of the interstate are widened



CONSTRUCTION PLAN



Construction is anticipated to begin in late 2022 and is anticipated to take approximately 3-4 years



www.270MRB.com





MOVEMENT OF TRAFFIC

PHASE 1

- The first new river bridge will be built immediately south of the existing bridge.
- Simultaneous construction on Riverview Drive interchange including its new southern bridge will begin.
- Once the new southern bridges are constructed, both directions of traffic will be moved to the new southern bridges.
- Next, the existing river bridge and the existing Riverview Drive interchange bridges will be demolished.

PHASE 2

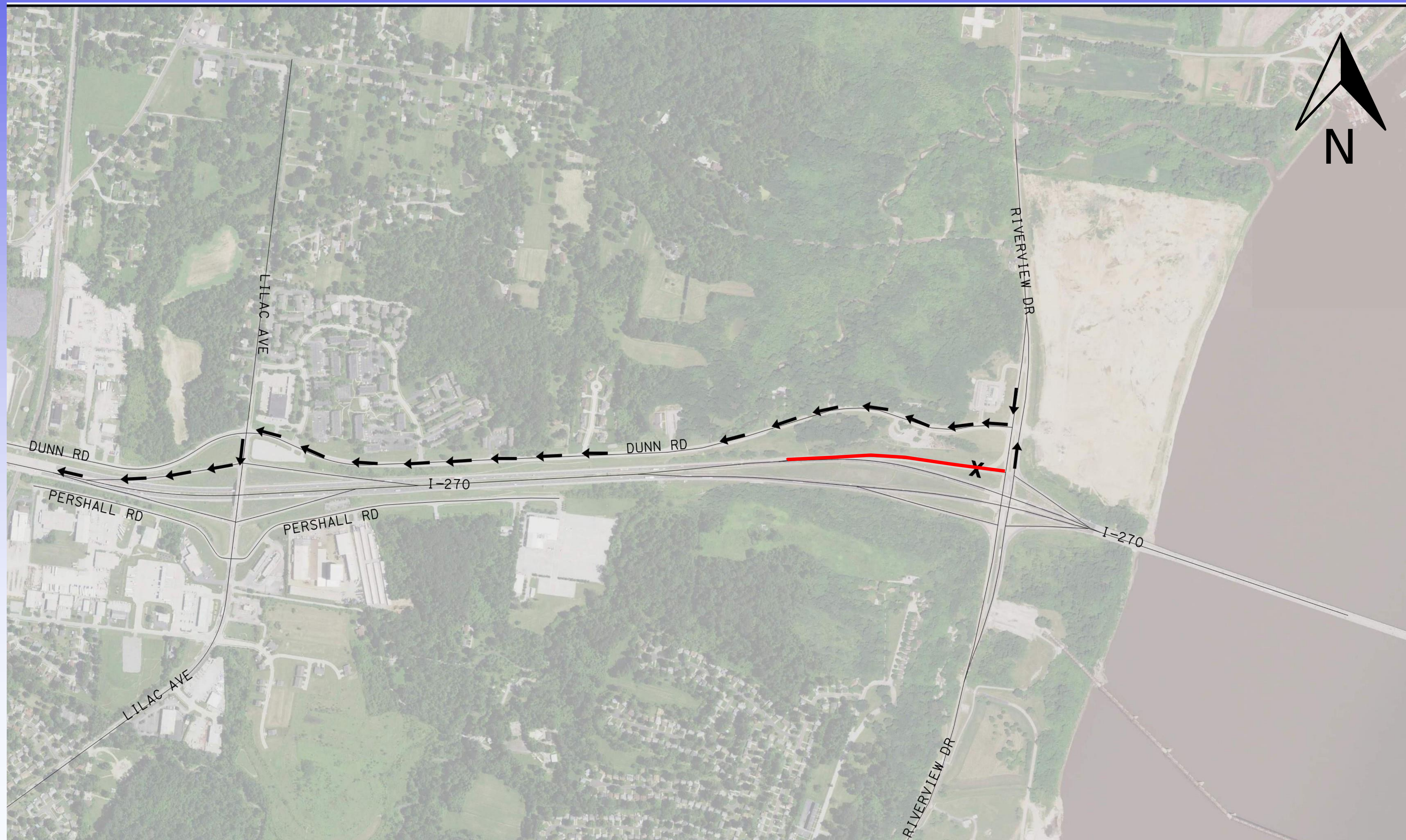
- Construction will then begin on the northern river bridge and northern Riverview Drive bridge.
- ❖ IDOT & MoDOT are expected to keep two lanes of traffic in each direction open on I-270 at all times.
- ❖ There will be closures on the EB I-270 entrance and exit ramps to Riverview Drive during a portion of construction during Phase 1.
- ❖ Detour routes will be signed. See detour route exhibits.
- ❖ One lane in each direction on Riverview Drive is expected to remain open during construction. However, weekend closures will be required to remove the existing bridges on I-270 that cross over Riverview Drive.



DETOUR ROUTE

Closure: I-270 WB on ramp from Riverview Dr.

Detour I-270 on-ramp traffic to WB Dunn. Traffic use WB I-270 on ramp at Lilac. Ave.

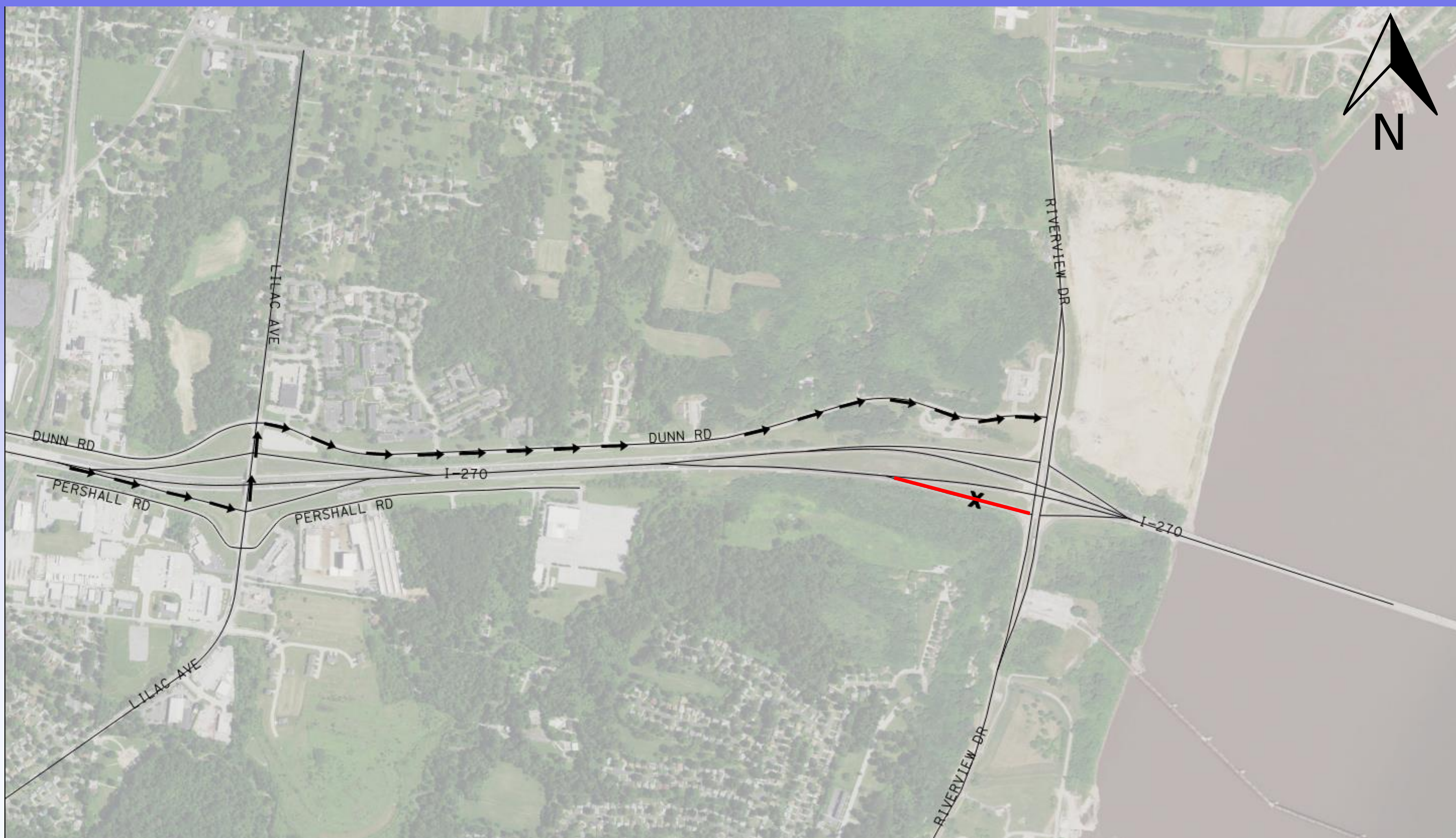




DETOUR ROUTE

Closure: I-270 EB off ramp to Riverview Dr.

Detour I-270 exit ramp traffic to NB Lilac to Ave. to EB Dunn Rd. Traffic will continue through to Riverview Dr.

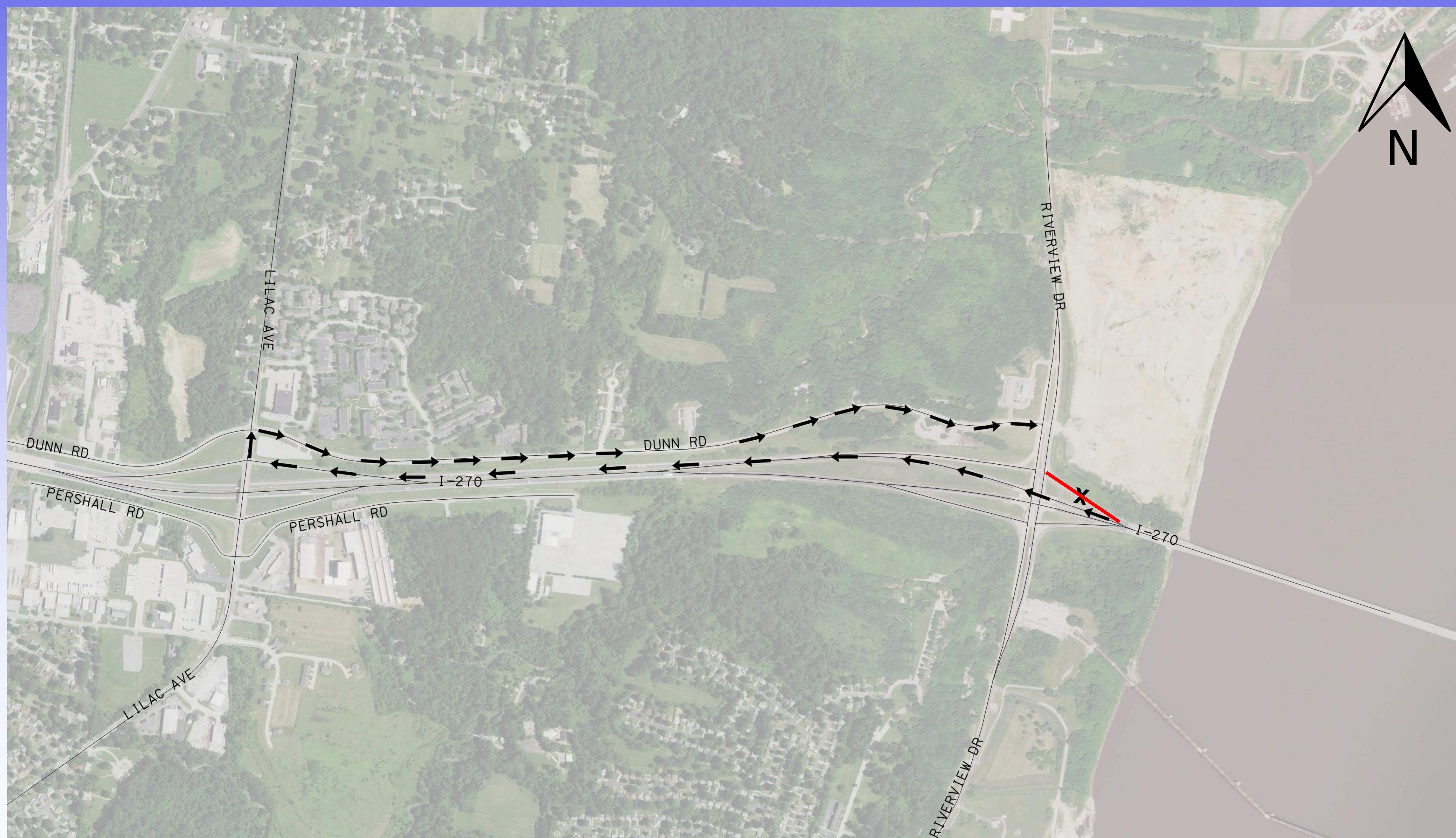




DETOUR ROUTE

Closure: I-270 WB off ramp to Riverview Dr.

Detour I-270 exit ramp traffic to NB Lilac Ave. to EB Dunn Rd. Traffic will continue through to Riverview Dr.





DETOUR ROUTE

Closure: I-270 EB on ramp from Riverview Dr.

Detour I-270 on-ramp traffic to WB I-270. Traffic use EB I-270 on ramp at Lilac Ave.





HOW CAN I GET UPDATES THROUGHOUT CONSTRUCTION?

WEBSITE

www.270MRB.com

SOCIAL MEDIA



Search: 270MRB
And “Like” or “Follow”

EMAIL ALERTS

Register to receive email alerts.

Visit the project website
and click on “**Email Alert Signup**”

QR CODE





COMMENTS

Please take a moment to complete a Comment Form

or

Take home a Comment Form and mail in

or

Visit the study websites to complete a comment form:

www.270MRB.com

Please return comments by May 18, 2022



***THANK YOU FOR YOUR
ATTENDANCE!***



Legend

	Proposed Stoplight		Shared Use Path by Others
	Lighting		Structure
	MSE Wall		Rock Blanket
	Existing Trail		Roadway Improvements
	Access Road		Planned Structure Expansion
	Construction Limits		Planned Roadway Expansion

Riverview Drive Interchange
St. Louis City and County, MO

