

CONSTRUCTION INCLUDES:

- PAVEMENT AND MEDIAN WORK AT RIVERVIEW DRIVE
- PAVEMENT WORK ON I-270 IN ILLINOIS
- CONSTRUCTION OF EASTBOUND RIVER BRIDGE

ALL ON & OFF RAMP FOR RIVERVIEW DRIVE ARE OPEN

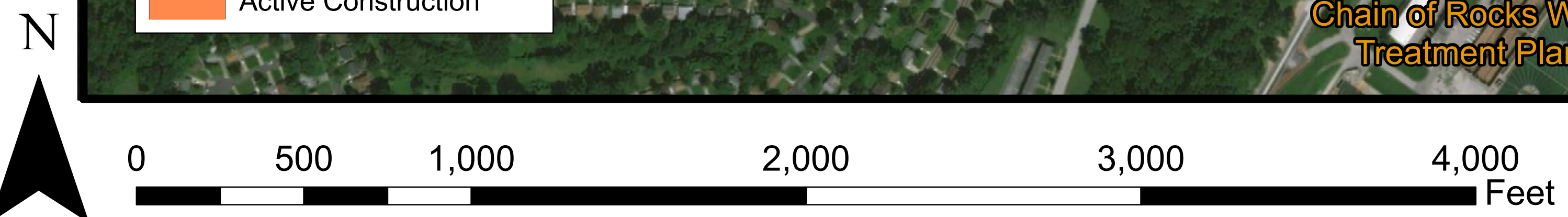
EB/WB I-270 TRAFFIC IS MAINTAINED ON EXISTING ROADWAY AND BRIDGE

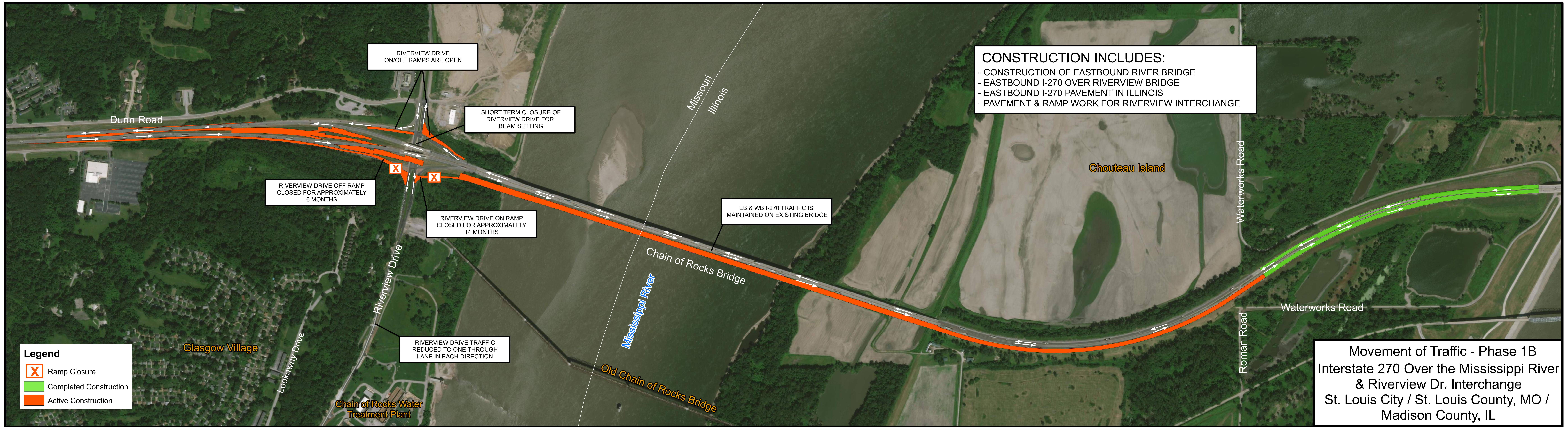
RIVERVIEW DRIVE TRAFFIC REDUCED TO ONE THROUGH LANE IN EACH DIRECTION

Movement of Traffic - Phase 1A
 Interstate 270 Over the Mississippi River & Riverview Dr. Interchange
 St. Louis City / St. Louis County, MO / Madison County, IL

Legend

- Ramp Closure
- Completed Construction
- Active Construction





CONSTRUCTION INCLUDES:

- CONSTRUCTION OF EASTBOUND RIVER BRIDGE
- EASTBOUND I-270 OVER RIVERVIEW BRIDGE
- EASTBOUND I-270 PAVEMENT IN ILLINOIS
- PAVEMENT & RAMP WORK FOR RIVERVIEW INTERCHANGE

RIVERVIEW DRIVE ON/OFF RAMPS ARE OPEN

SHORT TERM CLOSURE OF RIVERVIEW DRIVE FOR BEAM SETTING

RIVERVIEW DRIVE OFF RAMP CLOSED FOR APPROXIMATELY 6 MONTHS

RIVERVIEW DRIVE ON RAMP CLOSED FOR APPROXIMATELY 14 MONTHS

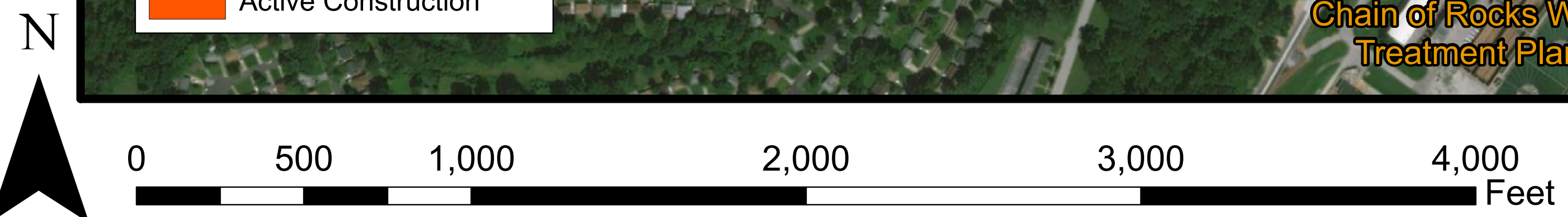
EB & WB I-270 TRAFFIC IS MAINTAINED ON EXISTING BRIDGE

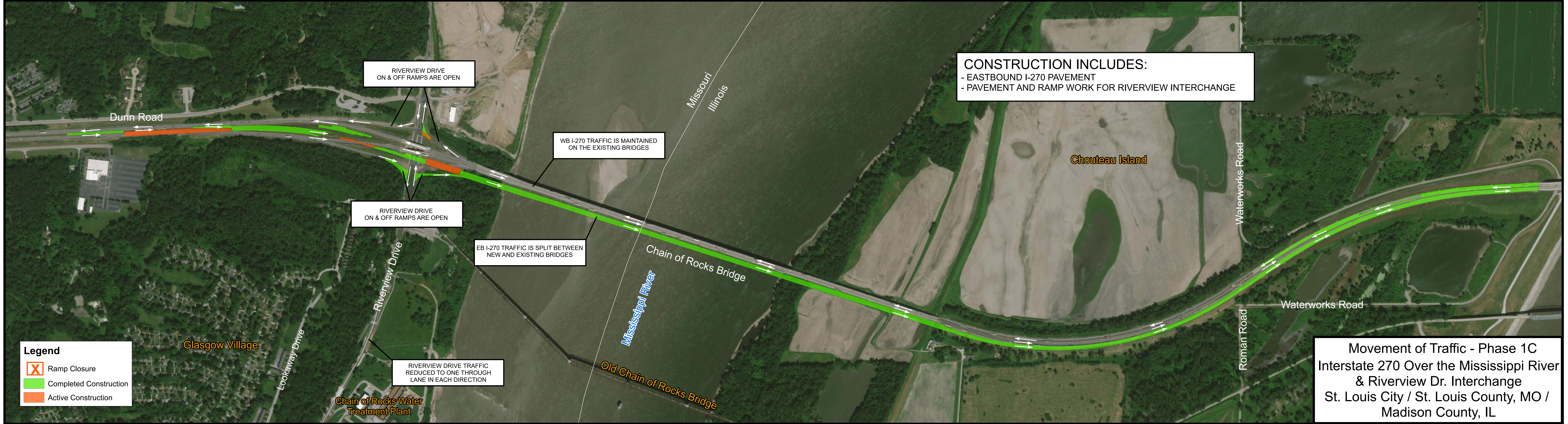
RIVERVIEW DRIVE TRAFFIC REDUCED TO ONE THROUGH LANE IN EACH DIRECTION

Legend

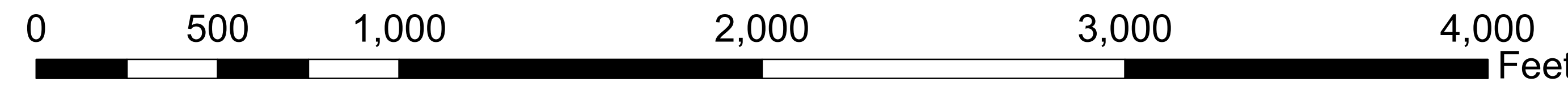
- X Ramp Closure
- Green Completed Construction
- Orange Active Construction

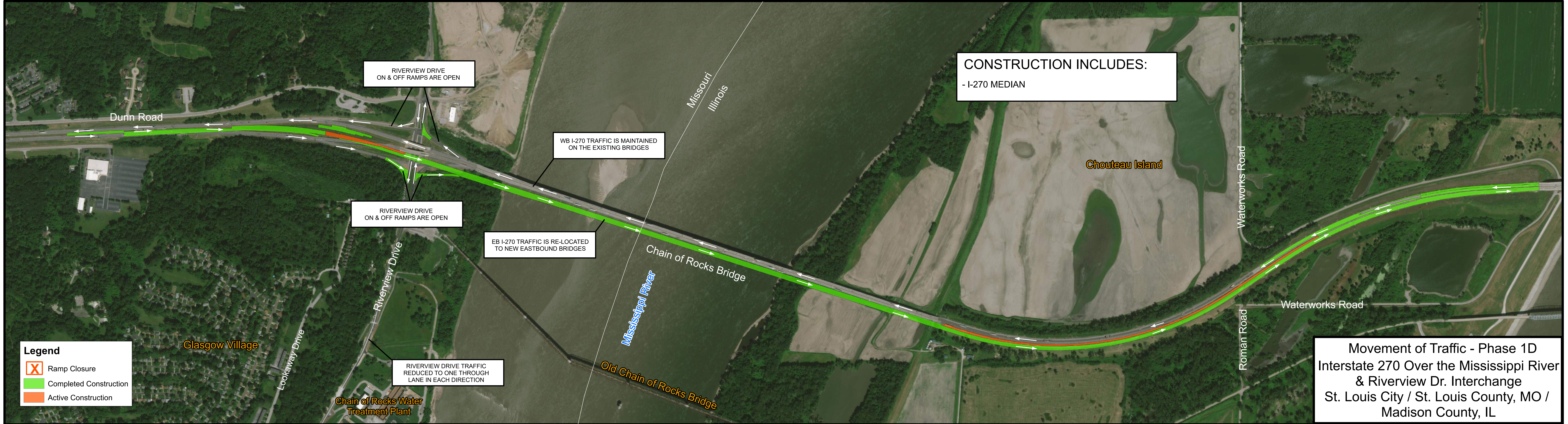
Movement of Traffic - Phase 1B
 Interstate 270 Over the Mississippi River & Riverview Dr. Interchange
 St. Louis City / St. Louis County, MO / Madison County, IL



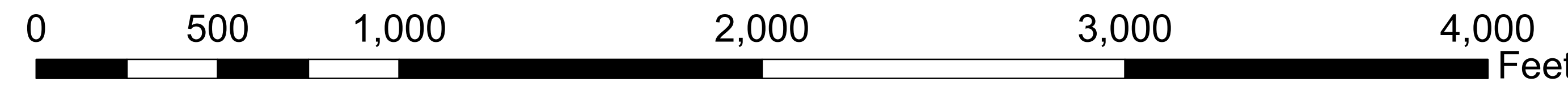


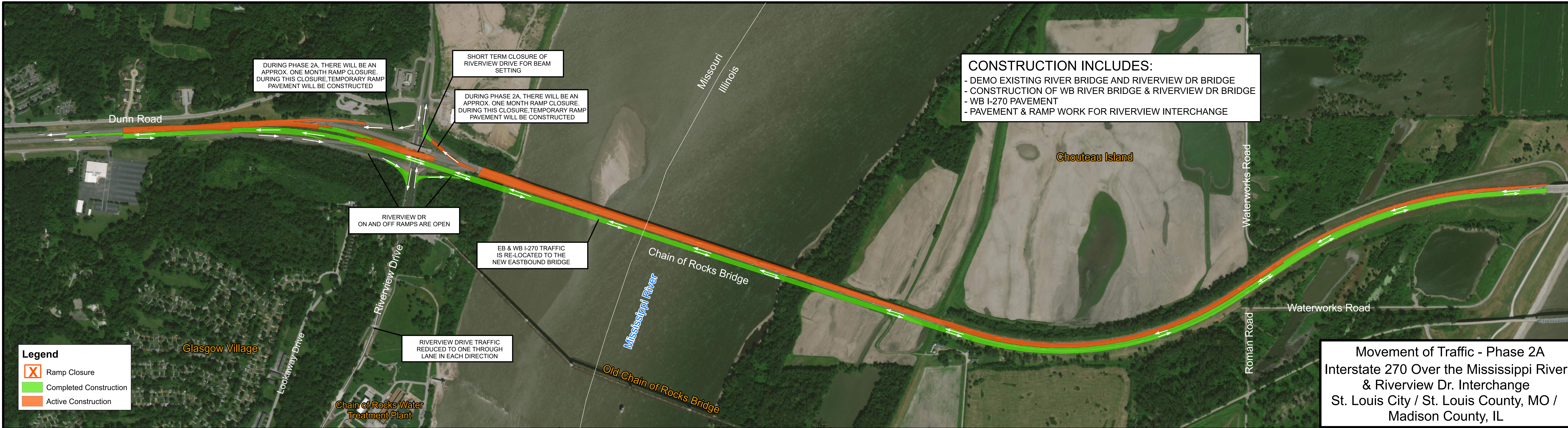
Movement of Traffic - Phase 1C
 Interstate 270 Over the Mississippi River
 & Riverview Dr. Interchange
 St. Louis City / St. Louis County, MO /
 Madison County, IL





Movement of Traffic - Phase 1D
 Interstate 270 Over the Mississippi River
 & Riverview Dr. Interchange
 St. Louis City / St. Louis County, MO /
 Madison County, IL





DURING PHASE 2A, THERE WILL BE AN APPROX. ONE MONTH RAMP CLOSURE. DURING THIS CLOSURE, TEMPORARY RAMP PAVEMENT WILL BE CONSTRUCTED

SHORT TERM CLOSURE OF RIVERVIEW DRIVE FOR BEAM SETTING

DURING PHASE 2A, THERE WILL BE AN APPROX. ONE MONTH RAMP CLOSURE. DURING THIS CLOSURE, TEMPORARY RAMP PAVEMENT WILL BE CONSTRUCTED

CONSTRUCTION INCLUDES:
 - DEMO EXISTING RIVER BRIDGE AND RIVERVIEW DR BRIDGE
 - CONSTRUCTION OF WB RIVER BRIDGE & RIVERVIEW DR BRIDGE
 - WB I-270 PAVEMENT
 - PAVEMENT & RAMP WORK FOR RIVERVIEW INTERCHANGE

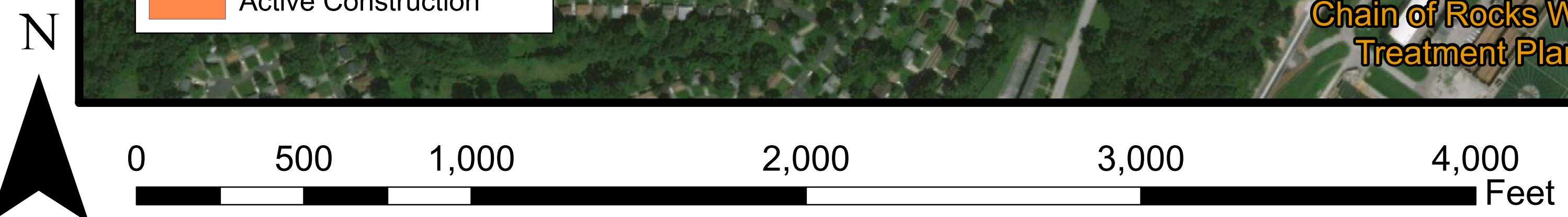
RIVERVIEW DR ON AND OFF RAMPS ARE OPEN

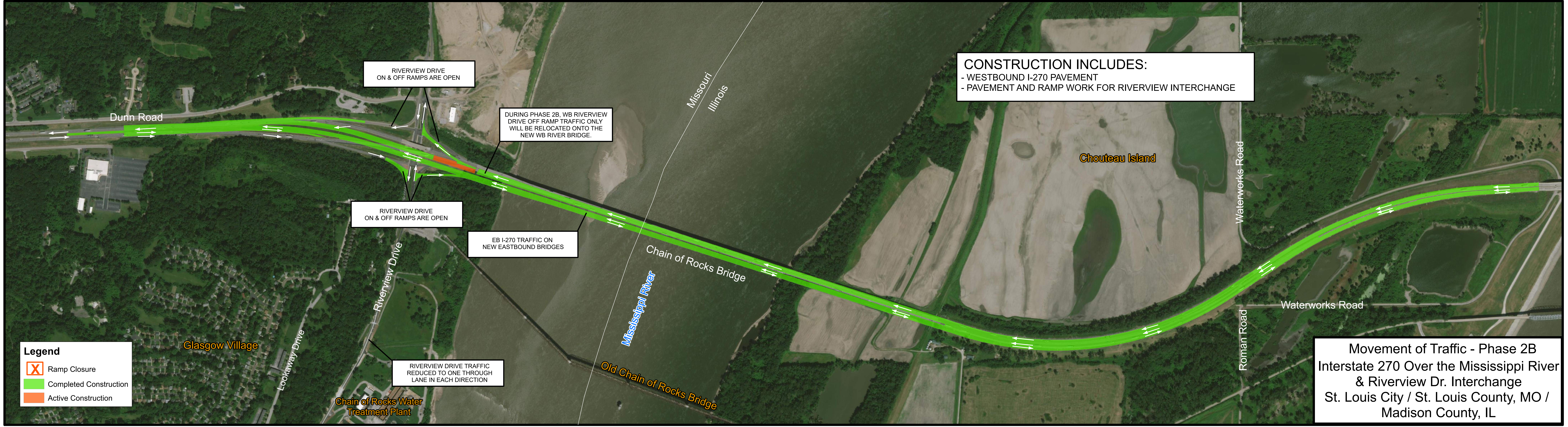
EB & WB I-270 TRAFFIC IS RE-LOCATED TO THE NEW EASTBOUND BRIDGE

RIVERVIEW DRIVE TRAFFIC REDUCED TO ONE THROUGH LANE IN EACH DIRECTION

Legend
 X Ramp Closure
 Completed Construction
 Active Construction

Movement of Traffic - Phase 2A
 Interstate 270 Over the Mississippi River & Riverview Dr. Interchange
 St. Louis City / St. Louis County, MO / Madison County, IL





CONSTRUCTION INCLUDES:
 - WESTBOUND I-270 PAVEMENT
 - PAVEMENT AND RAMP WORK FOR RIVERVIEW INTERCHANGE

RIVERVIEW DRIVE
ON & OFF RAMPS ARE OPEN




DURING PHASE 2B, WB RIVERVIEW
DRIVE OFF RAMP TRAFFIC ONLY
WILL BE RELOCATED ONTO THE
NEW WB RIVER BRIDGE.

RIVERVIEW DRIVE
ON & OFF RAMPS ARE OPEN

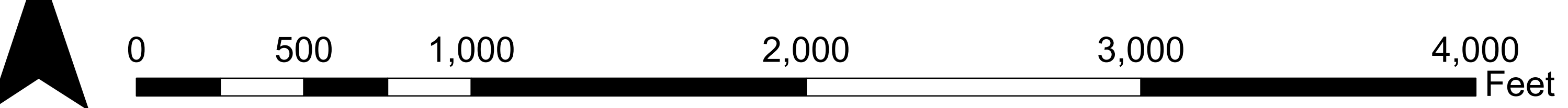
EB I-270 TRAFFIC ON
NEW EASTBOUND BRIDGES

RIVERVIEW DRIVE TRAFFIC
REDUCED TO ONE THROUGH
LANE IN EACH DIRECTION

Legend

-  Ramp Closure
-  Completed Construction
-  Active Construction

Movement of Traffic - Phase 2B
 Interstate 270 Over the Mississippi River
 & Riverview Dr. Interchange
 St. Louis City / St. Louis County, MO /
 Madison County, IL





CONSTRUCTION INCLUDES:
 - I-270 MEDIAN BARRIER
 - OFF RAMP AT RIVERVIEW DRIVE

DURING PHASE 2C, THERE WILL BE AN APPROX. ONE MONTH RAMP CLOSURE. DURING THIS CLOSURE, TEMPORARY RAMP PAVEMENT WILL BE CONSTRUCTED

RIVERVIEW DRIVE ON RAMP IS OPEN

EASTBOUND I-270 TRAFFIC ON NEW EASTBOUND BRIDGES

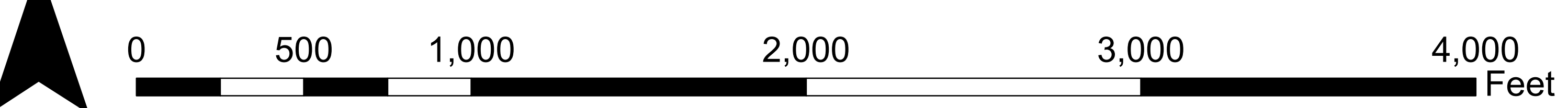
WESTBOUND I-270 TRAFFIC ON NEW WESTBOUND BRIDGES

RIVERVIEW DRIVE TRAFFIC REDUCED TO ONE THROUGH LANE IN EACH DIRECTION

Legend





- Ramp Closure
- Completed Construction
- Active Construction

Movement of Traffic - Phase 2C
 Interstate 270 Over the Mississippi River & Riverview Dr. Interchange
 St. Louis City / St. Louis County, MO / Madison County, IL





Legend

-  Proposed Stoplight
-  Ramp Closure
-  Completed Construction
-  Active Construction

Movement of Traffic - Final Phase
 Interstate 270 Over the Mississippi River
 & Riverview Dr. Interchange
 St. Louis City / St. Louis County, MO /
 Madison County, IL

